



**Fepic®**

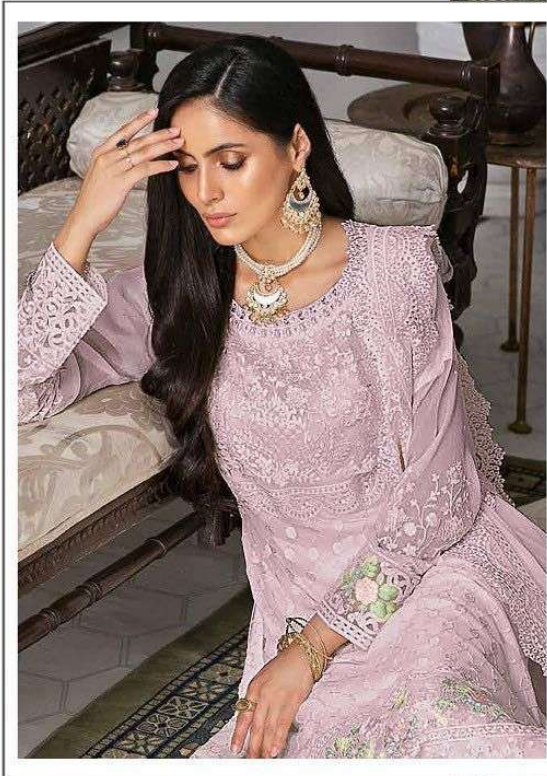


**WASHING INTRUCTIONS**

DO NOT USE ANY TYPE OF BLEACH OR STAIN REMOVING CHEMICALS  
BEFORE CUTTING / STITCHING, FABRIC SHOULD BE SOAKED IN WATER  
( ALL COMPONENTS SEPARATELY ) FOR 15 MINUTES  
DO NOT KEEP WET FABRIC IN TWISTED FROM IN ORDER TO AVOID COPY MARKS |  
WASH COLOURED AND WHITE FABRICS SEPARATELY  
IRON CLOTHES AT MODERATE TEMPERATURE | DO NOT DRY FABRIC IN DIRECT SUNLIGHT  
(EXTRA LACES, HANGINGS AND ACCESSORIES ARE NOT INDUED )

**C-1510 C**

**Fepic®**

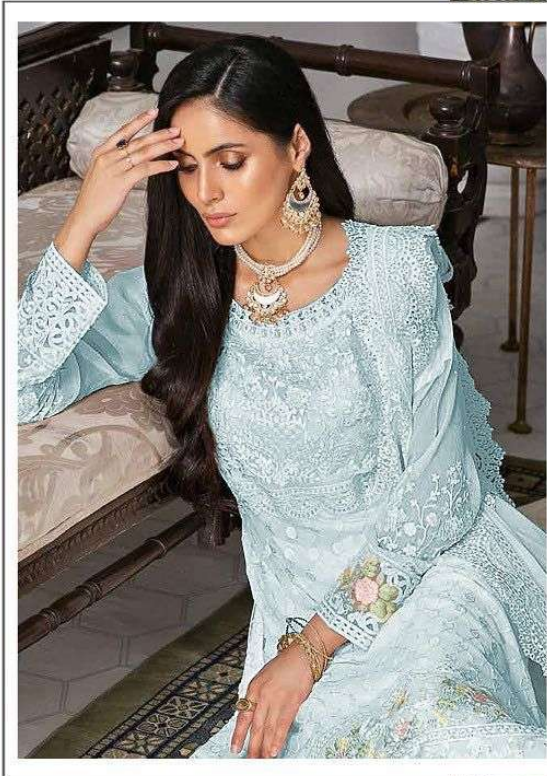


**WASHING INTRUCTIONS**

DO NOT USE ANY TYPE OF BLEACH OR STAIN REMOVING CHEMICALS  
BEFORE CUTTING / STITCHING, FABRIC SHOULD BE SOAKED IN WATER  
( ALL COMPONENTS SEPARATELY ) FOR 15 MINUTES  
DO NOT KEEP WET FABRIC IN TWISTED FROM IN ORDER TO AVOID COPY MARKS |  
WASH COLOURED AND WHITE FABRICS SEPARATELY  
IRON CLOTHES AT MODERATE TEMPERATURE | DO NOT DRY FABRIC IN DIRECT SUNLIGHT  
(EXTRA LACES, HANGINGS AND ACCESSORIES ARE NOT INDUED )

**C-1510 B**

**Fepic**<sup>®</sup>

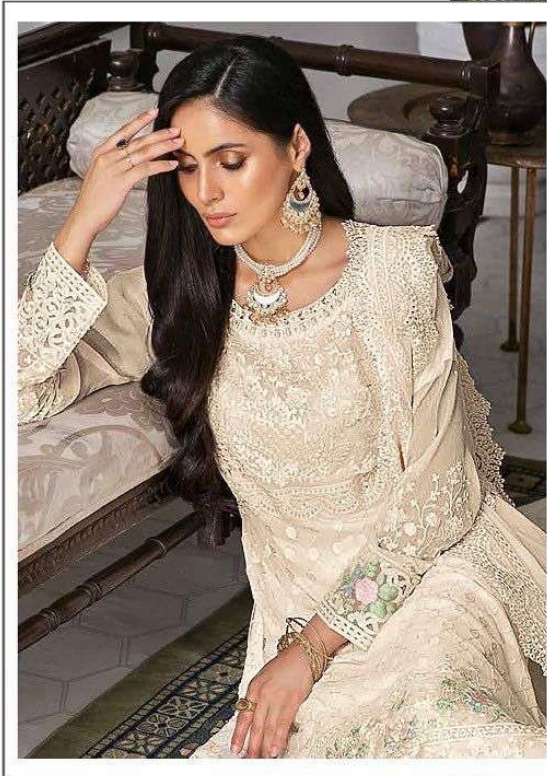


**WASHING INTRUCTIONS**

DO NOT USE ANY TYPE OF BLEACH OR STAIN REMOVING CHEMICALS  
BEFORE CUTTING / STITCHING, FABRIC SHOULD BE SOAKED IN WATER  
( ALL COMPONENTS SEPARATELY ) FOR 15 MINUTES  
DO NOT KEEP WET FABRIC IN TWISTED FROM IN ORDER TO AVOID COPY MARKS |  
WASH COLOURED AND WHITE FABRICS SEPARATELY  
IRON CLOTHES AT MODERATE TEMPERATURE | DO NOT DRY FABRIC IN DIRECT SUNLIGHT  
(EXTRA LACES, HANGINGS AND ACCESSORIES ARE NOT INLUDED )

C-1510 D

**Fepic**<sup>®</sup>



**WASHING INTRUCTIONS**

DO NOT USE ANY TYPE OF BLEACH OR STAIN REMOVING CHEMICALS  
BEFORE CUTTING / STITCHING, FABRIC SHOULD BE SOAKED IN WATER  
( ALL COMPONENTS SEPARATELY ) FOR 15 MINUTES  
DO NOT KEEP WET FABRIC IN TWISTED FROM IN ORDER TO AVOID COPY MARKS |  
WASH COLOURED AND WHITE FABRICS SEPARATELY  
IRON CLOTHES AT MODERATE TEMPERATURE | DO NOT DRY FABRIC IN DIRECT SUNLIGHT  
(EXTRA LACES, HANGINGS AND ACCESSORIES ARE NOT INDUED )

C-1510 A



**Fepic®**

**WEARING INSTRUCTIONS:**  
 1. Wash the fabric in cold water with mild detergent.  
 2. Do not use bleach or strong chemicals.  
 3. Iron on low heat, avoiding the lace details.  
 4. Dry in shade.  
 5. Do not wring or twist the fabric.  
 6. Store in a cool, dry place.  
 7. For more information, visit our website.

**C-1510 C**

**Fepic®**

**WEARING INSTRUCTIONS:**  
 1. Wash the fabric in cold water with mild detergent.  
 2. Do not use bleach or strong chemicals.  
 3. Iron on low heat, avoiding the lace details.  
 4. Dry in shade.  
 5. Do not wring or twist the fabric.  
 6. Store in a cool, dry place.  
 7. For more information, visit our website.

**C-1510 B**

**Fepic®**

**WEARING INSTRUCTIONS:**  
 1. Wash the fabric in cold water with mild detergent.  
 2. Do not use bleach or strong chemicals.  
 3. Iron on low heat, avoiding the lace details.  
 4. Dry in shade.  
 5. Do not wring or twist the fabric.  
 6. Store in a cool, dry place.  
 7. For more information, visit our website.

**C-1510 D**

**Fepic®**

**WEARING INSTRUCTIONS:**  
 1. Wash the fabric in cold water with mild detergent.  
 2. Do not use bleach or strong chemicals.  
 3. Iron on low heat, avoiding the lace details.  
 4. Dry in shade.  
 5. Do not wring or twist the fabric.  
 6. Store in a cool, dry place.  
 7. For more information, visit our website.

**C-1510 A**