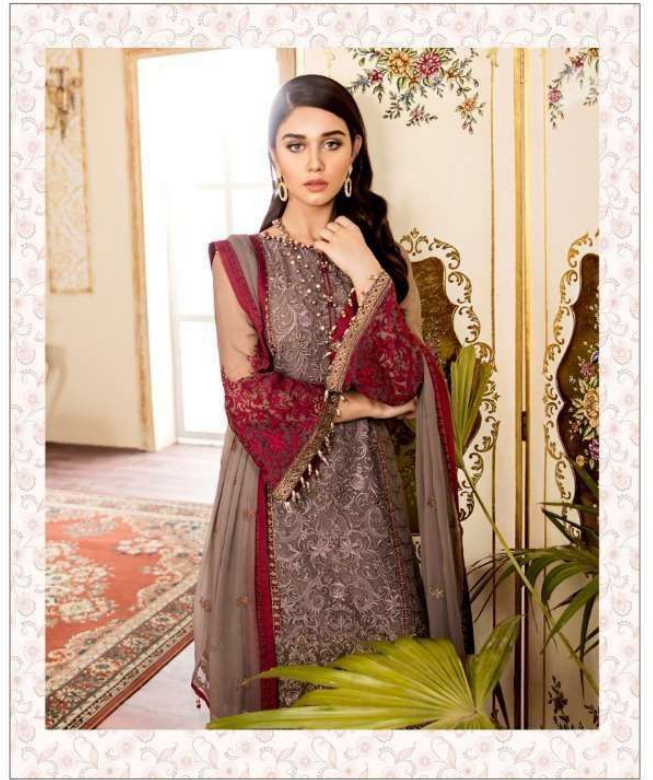


FEPIC





ROSEMEEN
ARCEZIA
 D.NO.54005

FABRIC DETAIL
 TOP-GEORGETTE
 INNER-SANTOON
 BOTTOM-SANTOON
 DUPATTA-NAZMEEN

QR
WASHING INSTRUCTIONS
 DO NOT USE ANY TYPE OF BLEACH OR STAIN REMOVING CHEMICALS
 BEFORE CUTTING / STITCHING, FABRIC SHOULD BE SOAKED IN WATER
 (ALL COMPONENTS SEPARATELY) FOR 15 MINUTES
 DO NOT KEEP WET FABRIC IN TWISTED FROM IN ORDER TO AVOID COPY MARKS !
 WASH COLOURED AND WHITE FABRICS SEPARATELY
 IRON CLOTHES AT MODERATE TEMPERATURE | DO NOT DRY FABRIC IN DIRECT SUNLIGHT

Fepic™



Rosemeen

Arcenia

