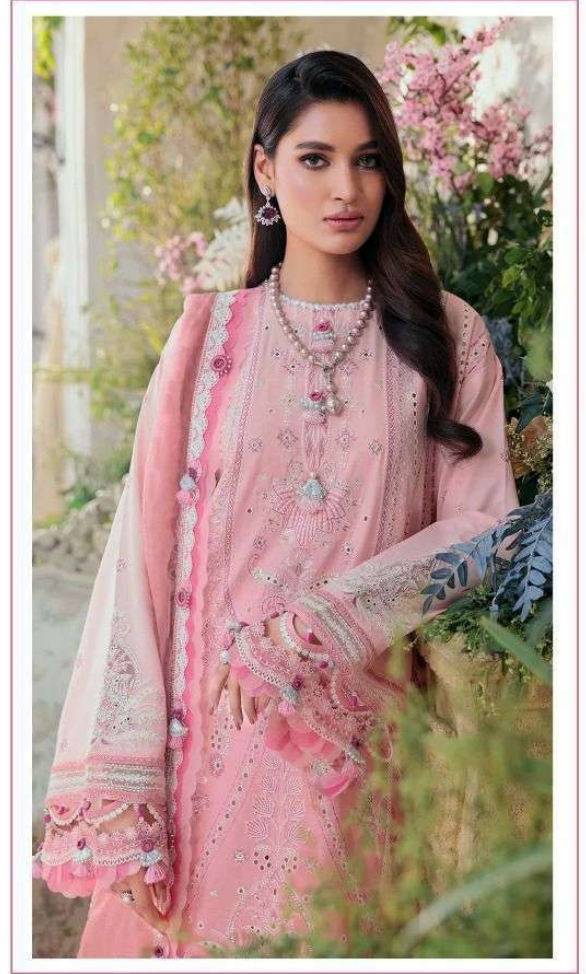






Epic®



WASHING INSTRUCTIONS

DO NOT USE ANY TYPE OF BLEACH OR STAIN REMOVING CHEMICALS
BEFORE CUTTING / STITCHING, FABRIC SHOULD BE SOAKED IN WATER
(ALL COMPONENTS SEPARATELY) FOR 15 MINUTES

DO NOT KEEP WET FABRIC IN TWISTED FORM IN ORDER TO AVOID COPY MARKS |

WASH COLOURED AND WHITE FABRICS SEPARATELY

IRON CLOTHES AT MODERATE TEMPERATURE | DO NOT DRY FABRIC IN DIRECT SUNLIGHT
(EXTRA LACES, HANGINGS AND ACCESSORIES ARE NOT INCLUDED)

Rosemeen®
Wardrobe
D.NO.91040



Epic[®]



WASHING INTRUCTIONS

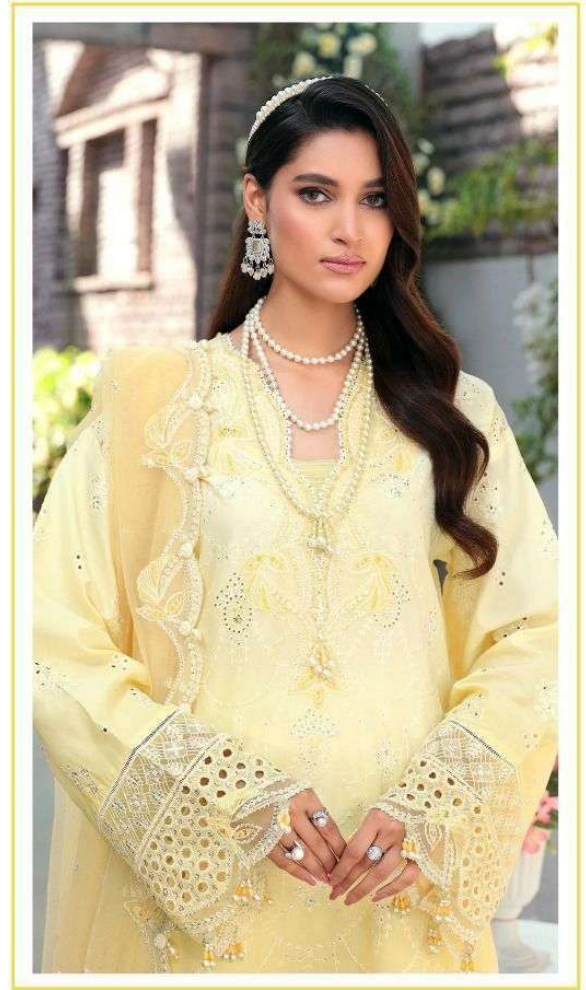
DO NOT USE ANY TYPE OF BLEACH OR STAIN REMOVING CHEMICALS
BEFORE CUTTING / STITCHING, FABRIC SHOULD BE SOAKED IN WATER
(ALL COMPONENTS SEPARATELY) FOR 15 MINUTES
DO NOT KEEP WET FABRIC IN TWISTED FROM IN ORDER TO AVOID COPY MARKS |
WASH COLOURED AND WHITE FABRICS SEPARATELY
IRON CLOTHES AT MODERATE TEMPERATURE | DO NOT DRY FABRIC IN DIRECT SUNLIGHT
(EXTRA LACES, HANGINGS AND ACCESSORIES ARE NOT INDUDED)

Rosemeen[®]
Wardrobe
D.NO.91041





Fepic®



WASHING INTRUCTIONS

DO NOT USE ANY TYPE OF BLEACH OR STAIN REMOVING CHEMICALS
 BEFORE CUTTING / STITCHING. FABRIC SHOULD BE SOAKED IN WATER
 (ALL COMPONENTS SEPARATELY) FOR 15 MINUTES
 DO NOT KEEP WET FABRIC IN TWISTED FROM IN ORDER TO AVOID COPY MARKS |
 WASH COLOURED AND WHITE FABRICS SEPARATELY
 IRON CLOTHES AT MODERATE TEMPERATURE | DO NOT DRY FABRIC IN DIRECT SUNLIGHT
 (EXTRA LACES, HANGINGS AND ACCESSORIES ARE NOT INLUDED)

Rosemeen®
Wardrobe
 D.NO.91042





Rosemeen®
Wardrobe
D.NO.91043



D.NO.91040



D.NO.91041



D.NO.91042



D.NO.91043

Fepic®

Rosemeen
Wardrobe

Instagram: [_Fepic](#)

Facebook: [Fb.com/Fepic11](#)

| D.NO | TOP | INNER | BOTTOM | DUPATTA | RATE |
|-------|----------------------------|---------|--------------------------|----------------------------------|------|
| 91040 | FAUX GEORGETTE EMBROIDERED | SANTOON | SANTOON WITH PAYAL PATCH | NET EMBROIDERED WITH MIRROR WORK | 1289 |
| 91041 | BUTTERFLY NET EMBROIDERED | SANTOON | SANTOON | NET EMBROIDERED WITH PEARL WORK | 1229 |
| 91042 | FAUX GEORGETTE EMBROIDERED | SANTOON | SANTOON WITH PAYAL PATCH | NET EMBROIDERED | 1249 |
| 91043 | FAUX GEORGETTE EMBROIDERED | SANTOON | SANTOON WITH PAYAL PATCH | DIGITAL PRINTED CHIFFON DUPATTA | 1349 |

AVERAGE RATE-1279

Fepic[®]

Rosemeen[®]
Wardrobe

 :_Fepic

 :Fb.com/Fepic11