



Fepic®



WASHING INTRUCTIONS

DO NOT USE ANY TYPE OF BLEACH OR STAIN REMOVING CHEMICALS
BEFORE CUTTING / STITCHING, FABRIC SHOULD BE SOAKED IN WATER
(ALL COMPONENTS SEPARATELY) FOR 15 MINUTES

DO NOT KEEP WET FABRIC IN TWISTED FROM IN ORDER TO AVOID COPY MARKS |
WASH COLOURED AND WHITE FABRICS SEPARATELY

IRON CLOTHES AT MODERATE TEMPERATURE | DO NOT DRY FABRIC IN DIRECT SUNLIGHT
(EXTRA LACES, HANGINGS AND ACCESSORIES ARE NOT INDUDED)

Rosemeen®

Ezlyn

D.NO.90027



Fepic®



WASHING INSTRUCTIONS

DO NOT USE ANY TYPE OF BLEACH OR STAIN REMOVING CHEMICALS
BEFORE CUTTING / STITCHING. FABRIC SHOULD BE SOAKED IN WATER
(ALL COMPONENTS SEPARATELY) FOR 15 MINUTES
DO NOT KEEP WET FABRIC IN TWISTED FORM IN ORDER TO AVOID COPY MARKS |
WASH COLOURED AND WHITE FABRICS SEPARATELY
IRON CLOTHES AT MODERATE TEMPERATURE | DO NOT DRY FABRIC IN DIRECT SUNLIGHT
(EXTRA LACES, HANGINGS AND ACCESSORIES ARE NOT INCLUDED)

Rosemeen®

Ezlyn

D.NO.90028



Fepic

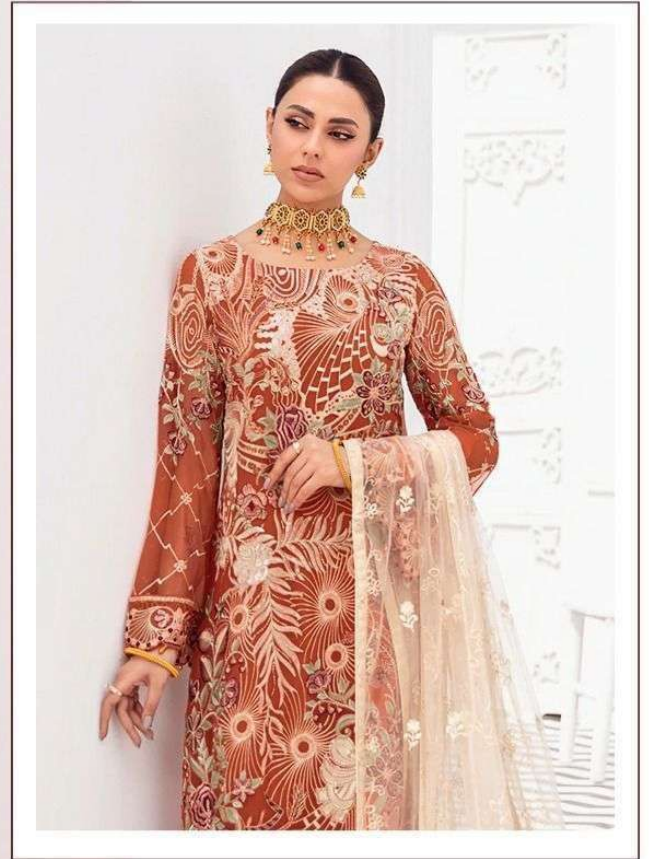
D.NO.90029



Rosemeen
Ezlyn



Fepic®



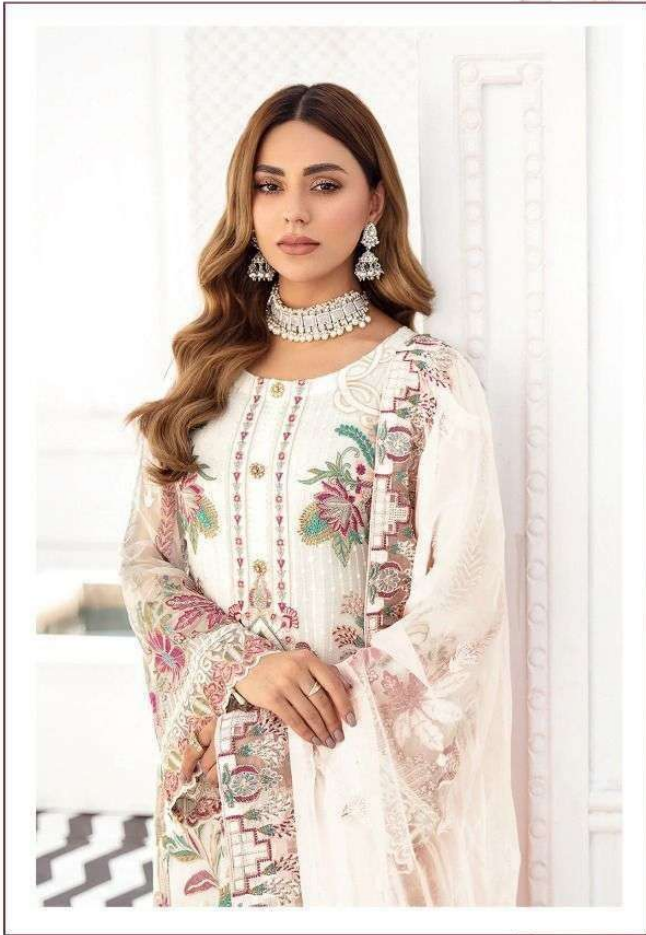
WASHING INSTRUCTIONS

DO NOT USE ANY TYPE OF BLEACH OR STAIN REMOVING CHEMICALS
BEFORE CUTTING / STITCHING, FABRIC SHOULD BE SOAKED IN WATER
(ALL COMPONENTS SEPARATELY) FOR 15 MINUTES
DO NOT KEEP WET FABRIC IN TWISTED FORM IN ORDER TO AVOID COPY MARKS |
WASH COLOURED AND WHITE FABRICS SEPARATELY
IRON CLOTHES AT MODERATE TEMPERATURE | DO NOT DRY FABRIC IN DIRECT SUNLIGHT
(EXTRA LACES, HANGINGS AND ACCESSORIES ARE NOT INCLUDED)

Rosemeen®
Ezlyn
D.NO.90030



Fepic®



WASHING INTRUCTIONS

DO NOT USE ANY TYPE OF BLEACH OR STAIN REMOVING CHEMICALS
BEFORE CUTTING / STITCHING, FABRIC SHOULD BE SOAKED IN WATER
(ALL COMPONENTS SEPARATELY) FOR 15 MINUTES
DO NOT KEEP WET FABRIC IN TWISTED FORM IN ORDER TO AVOID COPY MARKS |
WASH COLOURED AND WHITE FABRICS SEPARATELY
IRON CLOTHES AT MODERATE TEMPERATURE | DO NOT DRY FABRIC IN DIRECT SUNLIGHT
(EXTRA LACES, HANGINGS AND ACCESSORIES ARE NOT INCLUDED)

Rosemeen®

Ezlyn

D.NO.90031



Fepic®



WASHING INSTRUCTIONS

DO NOT USE ANY TYPE OF BLEACH OR STAIN REMOVING CHEMICALS
BEFORE CUTTING / STITCHING. FABRIC SHOULD BE SOAKED IN WATER
(ALL COMPONENTS SEPARATELY) FOR 15 MINUTES
DO NOT KEEP WET FABRIC IN TWISTED FORM IN ORDER TO AVOID COPY MARKS |
WASH COLOURED AND WHITE FABRICS SEPARATELY
IRON CLOTHES AT MODERATE TEMPERATURE | DO NOT DRY FABRIC IN DIRECT SUNLIGHT
(EXTRA LACES, HANGINGS AND ACCESSORIES ARE NOT INCLUDED)

Rosemeen®

Ezlyn

D.NO.90032





D.NO.90027



D.NO.90028



D.NO.90029



D.NO.90030



D.NO.90031



D.NO.90032

Fepic **Rosemeen**
Ezlyn

 :Fepic

 :Fb.com/Fepic11

D.NO	TOP	INNER	BOTTOM	DUPATTA	PRICE
90027	GEORGETTE EMBROIDERED	SANTOON	SANTOON WITH EMB PAYAL PATCH	NAZMEEN EMBROIDERED	1345
90028	GEORGETTE EMBROIDERED	SANTOON	SANTOON WITH EMB PAYAL PATCH	HEAVY NET EMBROIDERED FRILL DUPATTA	1383
90029	GEORGETTE EMBROIDERED	SANTOON	SANTOON WITH EMB PAYAL PATCH	NAZMEEN EMBROIDERED	1378
90030	GEORGETTE EMBROIDERED	SANTOON	SANTOON WITH EMB PAYAL PATCH	HEAVY NET EMBROIDERED	1422
90031	GEORGETTE EMBROIDERED	SANTOON	SANTOON WITH EMB PAYAL PATCH	NAZMEEN EMBROIDERED FRILL DUPATTA	1455
90032	GEORGETTE EMBROIDERED	SANTOON	SANTOON WITH EMB PAYAL PATCH	NAZMEEN EMBROIDERED	1409
					AVG PRICE 1399





[_Fepic](https://www.instagram.com/_Fepic)

[:Fb.com/Fepic11](https://www.facebook.com/Fepic11)