



Epic[®]



WASHING INTRUCTIONS

DO NOT USE ANY TYPE OF BLEACH OR STAIN REMOVING CHEMICALS
BEFORE CUTTING / STITCHING, FABRIC SHOULD BE SOAKED BE SOAKED IN WATER
(ALL COMPONENTS SEPARATELY) FOR 15 MINUTES

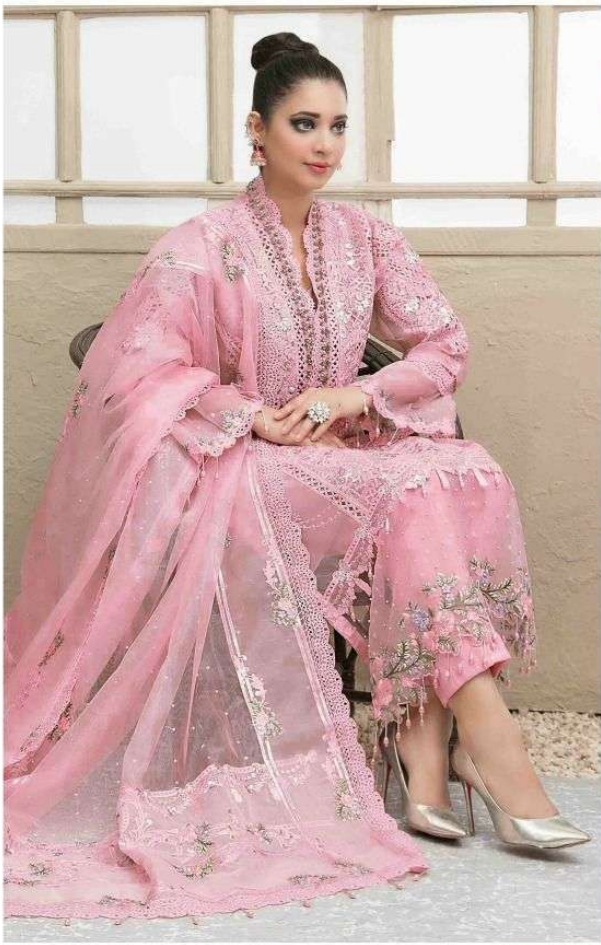
DO NOT KEEP WET FABRIC IN TWISTED FROM IN ORDER TO AVOID COPY MARKS |
WASH COLOURED AND WHITE FABRICS SEPARATELY

IRON CLOTHES AT MODERATE TEMPERATURE | DO NOT DRY FABRIC IN DIRECT SUNLIGHT
(EXTRA LACES, HANGINGS AND ACCESSORIES ARE NOT INDUDED)

C-1217 A



Fepic®



WASHING INTRUCTIONS

DO NOT USE ANY TYPE OF BLEACH OR STAIN REMOVING CHEMICALS
BEFORE CUTTING / STITCHING, FABRIC SHOULD BE SOAKED BE SOAKED IN WATER
(ALL COMPONENTS SEPARATELY) FOR 15 MINUTES
DO NOT KEEP WET FABRIC IN TWISTED FROM IN ORDER TO AVOID COPY MARKS |
WASH COLOURED AND WHITE FABRICS SEPARATELY
IRON CLOTHES AT MODERATE TEMPERATURE | DO NOT DRY FABRIC IN DIRECT SUNLIGHT
(EXTRA LACES, HANGINGS AND ACCESSORIES ARE NOT INDUDED)

C-1217 B



Fepic®



WASHING INTRUCTIONS

DO NOT USE ANY TYPE OF BLEACH OR STAIN REMOVING CHEMICALS
BEFORE CUTTING / STITCHING, FABRIC SHOULD BE SOAKED IN WATER
(ALL COMPONENTS SEPARATELY) FOR 15 MINUTES
DO NOT KEEP WET FABRIC IN TWISTED FROM IN ORDER TO AVOID COPY MARKS |
WASH COLOURED AND WHITE FABRICS SEPARATELY
IRON CLOTHES AT MODERATE TEMPERATURE | DO NOT DRY FABRIC IN DIRECT SUNLIGHT
(EXTRA LACES, HANGINGS AND ACCESSORIES ARE NOT INDUED)

C-1217 C



Epic®



WASHING INTRUCTIONS

DO NOT USE ANY TYPE OF BLEACH OR STAIN REMOVING CHEMICALS
BEFORE CUTTING / STITCHING, FABRIC SHOULD BE SOAKED BE SOAKED IN WATER
(ALL COMPONENTS SEPARATELY) FOR 15 MINUTES
DO NOT KEEP WET FABRIC IN TWISTED FROM IN ORDER TO AVOID COPY MARKS |
WASH COLOURED AND WHITE FABRICS SEPARATELY
IRON CLOTHES AT MODERATE TEMPERATURE | DO NOT DRY FABRIC IN DIRECT SUNLIGHT
(EXTRA LACES, HANGINGS AND ACCESSORIES ARE NOT INDUDED)

C-1217 D





C-1217 A



C-1217 B





C-1217 C



C-1217 D

Fepic®

 :_Fepic

 :Fb.com/Fepic11