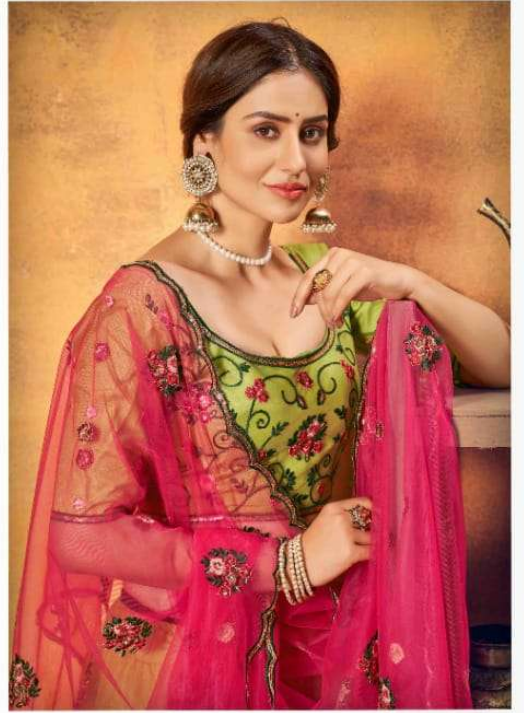
 Ubhkala
PERFECT STYLE RADIANT

1751

शुभकला bhkala



1752



1753

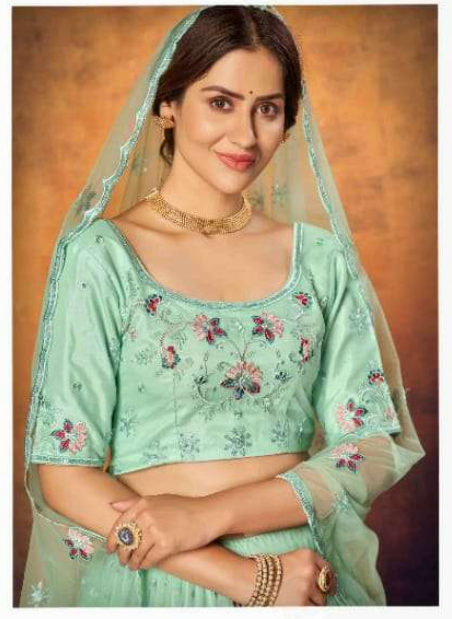


Swabhkala

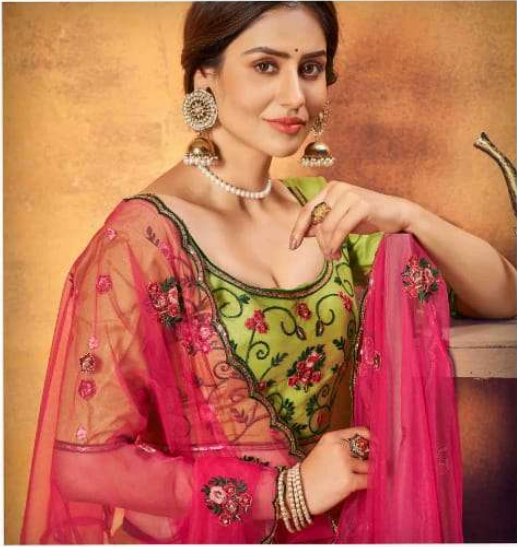
We Work in Collaboration with the Country's Leading, most Professional Dealer and Retail.



श्रीbhkala



1754



GIRLY

VOL. 18

Design NO. (SKU)	Mani Color	Lehenga Fabric	Choli Fabric	Dupatta Fabric	SIZE (SEMI - STITCHED)	Lehenga Work	Choli Work	Dupatta Work	Choli Length MTR	Lehenga Length INCH	Dupatta Length MTR	Weight
1751	White Peach	NET	NET	NET	UPTO 42 BUST AND WAIST	Thread with Sequence Embroidered	Thread with Sequence Embroidered	Thread with Sequence Embroidered	1 MTR	42 INCH	2.30 MTR	1.5 KG
1752	Floracance Deep Pink	NET	NET	NET	UPTO 42 BUST AND WAIST	Thread with Sequence Embroidered	Thread with Sequence Embroidered	Thread with Sequence Embroidered	1 MTR	42 INCH	2.30 MTR	1.5 KG
1753	Dusty	NET	NET	NET	UPTO 42 BUST AND WAIST	Thread with Sequence Embroidered	Thread with Sequence Embroidered	Thread with Sequence Embroidered	1 MTR	42 INCH	2.30 MTR	1.5 KG
1754	Mint Green	NET	NET	NET	UPTO 42 BUST AND WAIST	Thread with Sequence Embroidered	Thread with Sequence Embroidered	Thread with Sequence Embroidered	1 MTR	42 INCH	2.30 MTR	1.5 KG

THIS BOOK / CATALOGUE / LOGO / ARE PROTECTED UNDER COPYRIGHT ACT.

AN ILLEGAL/UNAUTHORIZED REPRINT, PUBLISHING, REPRODUCTION, DISTRIBUTION AND MODIFICATION OF ANY IMAGES, PHOTOGRAPHS AND PRODUCTCS, TOTALLY OR IN PART, FOR ANY PURPOSE, REASON OR CAUSE IS STRICTLY PROHIBITED AND PUNISHABLE UNDER LAW.



1751



1752



1753



1754