





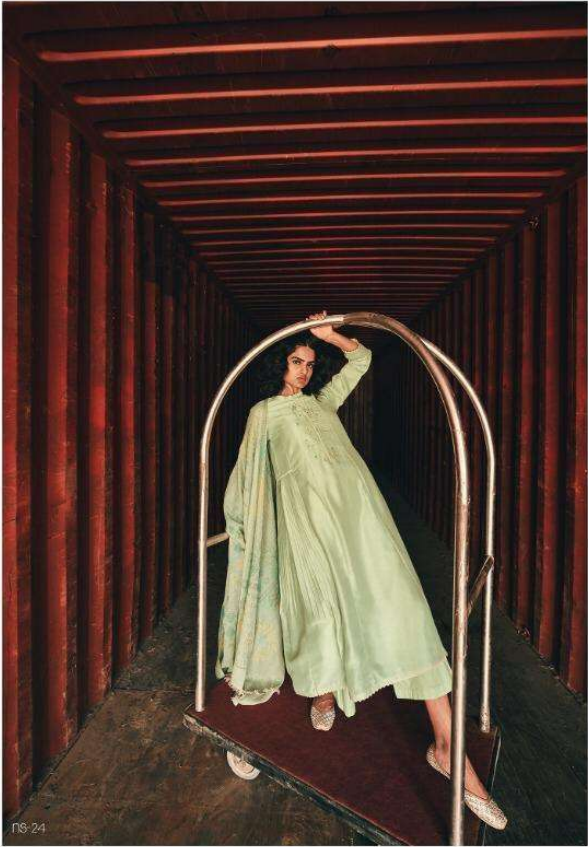
18-21

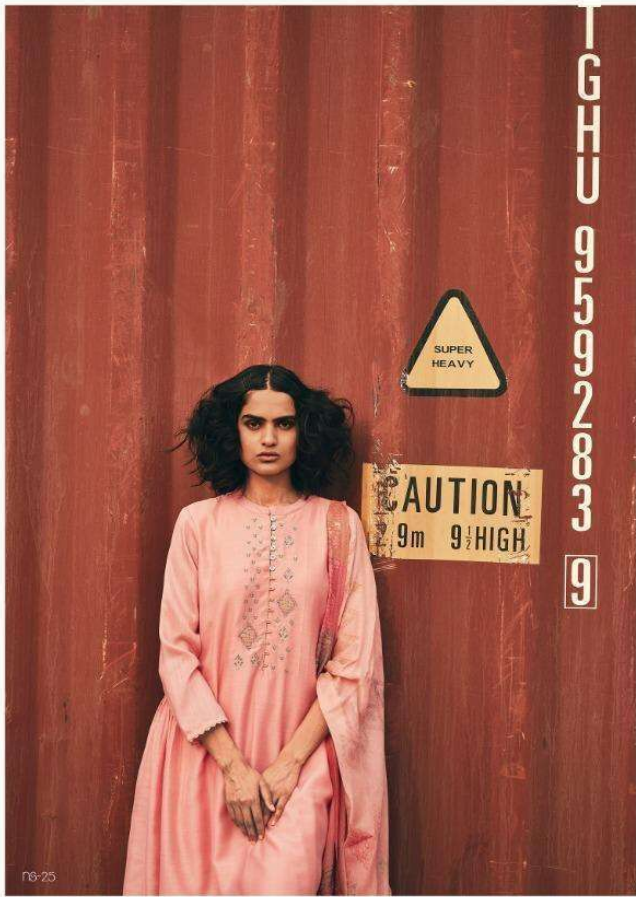


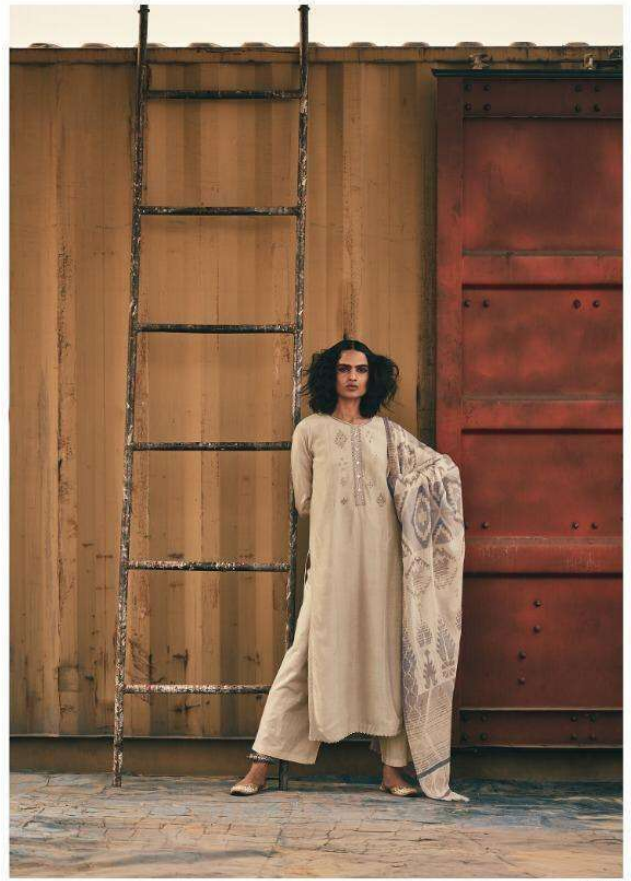
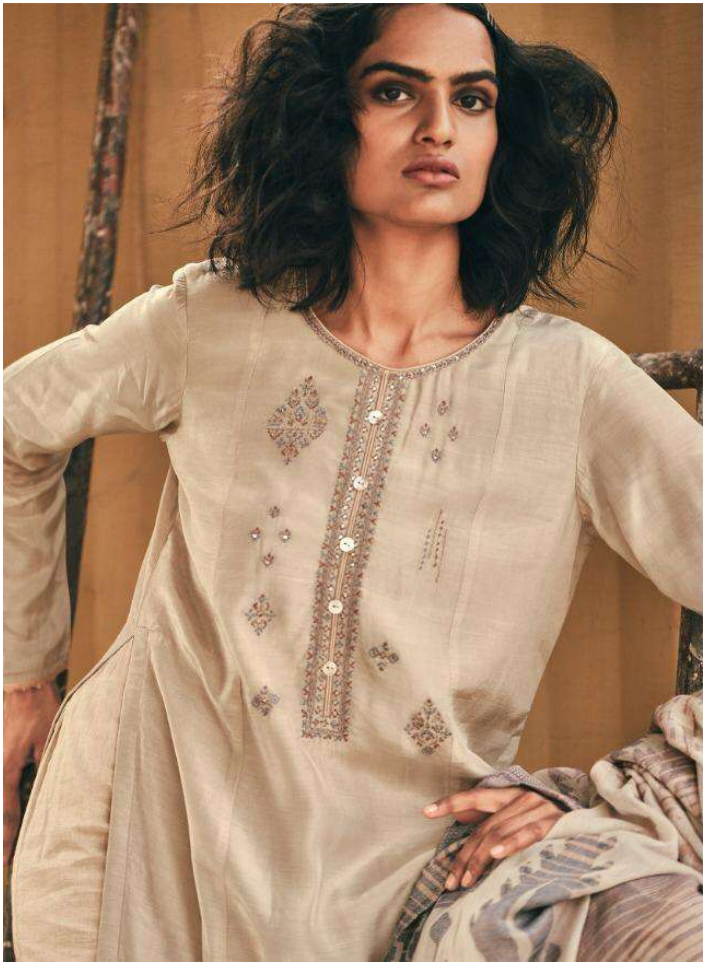


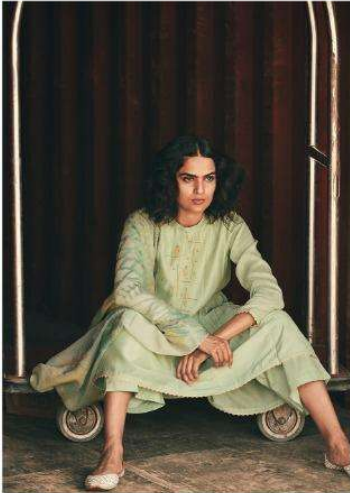
16-22











VARSHA
nautical spring



DESIGN	PRICE	DESCRIPTION
NS-21	1880	•TOP• MULBERRY WITH EMBROIDERY
NS-22	1880	
NS-23	1880	•BOTTOM• SUPERIOR COTTON
NS-24	1880	
NS-25	1880	•DUPATTA• EGYPTIAN SOFT COTTON WOVEN
NS-26	1880	

TOTAL AMOUNT : 11,280/- +GST

TOTAL PIECES : 6

FROM VARSHA FASHION

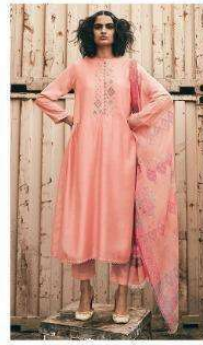




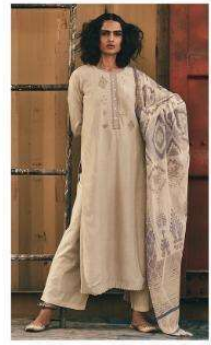
ns-21



ns-22



ns-25



ns-26



ns-23



ns-24

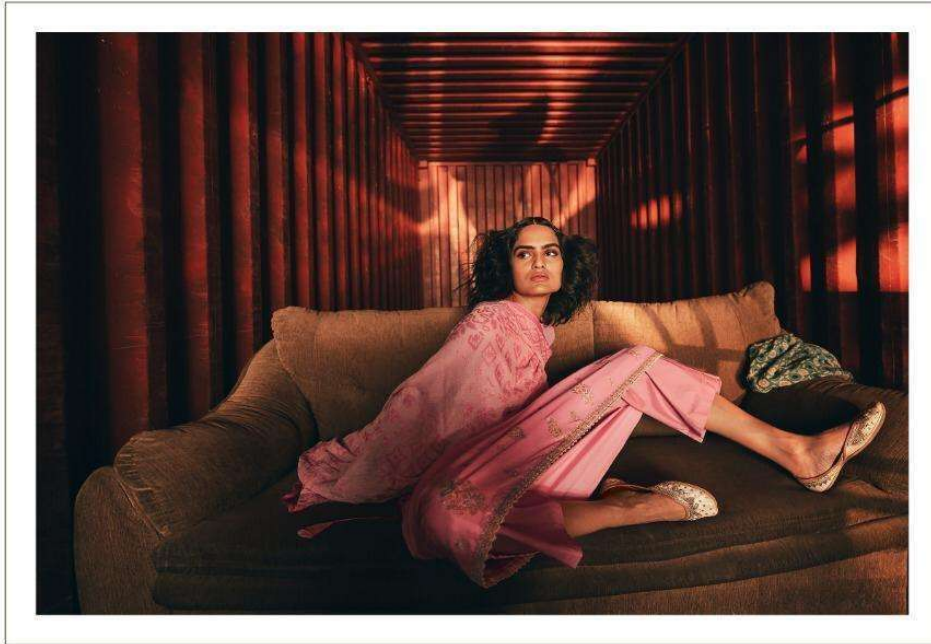


VARSHA

nautical spring



VARSHA
nautical spring



PRODUCT DETAILS

TOP : MULBERRY WITH EMBROIDERY
BOTTOM : SUPERIOR COTTON
DUPATTA : EGYPTIAN SOFT COTTON WOVEN

FROM VARSHA FASHION

