



**Fepic**<sup>®</sup>



**WASHING INTRUCTIONS**

DO NOT USE ANY TYPE OF BLEACH OR STAIN REMOVING CHEMICALS  
BEFORE CUTTING / STITCHING, FABRIC SHOULD BE SOAKED BE SOAKED IN WATER  
( ALL COMPONENTS SEPARATELY ) FOR 15 MINUTES

DO NOT KEEP WET FABRIC IN TWISTED FROM IN ORDER TO AVOID COPY MARKS |  
WASH COLOURED AND WHITE FABRICS SEPARATELY

IRON CLOTHES AT MODERATE TEMPERATURE | DO NOT DRY FABRIC IN DIRECT SUNLIGHT  
( EXTRA LACES, HANGINGS AND ACCESSORIES ARE NOT INLUDED )

**C-1215 A**



**Fepic®**



**WASHING INTRUCTIONS**

DO NOT USE ANY TYPE OF BLEACH OR STAIN REMOVING CHEMICALS  
BEFORE CUTTING / STITCHING, FABRIC SHOULD BE SOAKED BE SOAKED IN WATER  
( ALL COMPONENTS SEPARATELY ) FOR 15 MINUTES

DO NOT KEEP WET FABRIC IN TWISTED FROM IN ORDER TO AVOID COPY MARKS |  
WASH COLOURED AND WHITE FABRICS SEPARATELY

IRON CLOTHES AT MODERATE TEMPERATURE | DO NOT DRY FABRIC IN DIRECT SUNLIGHT  
( EXTRA LACES, HANGINGS AND ACCESSORIES ARE NOT INLUDED )

**C-1215 B**



**Fepic®**



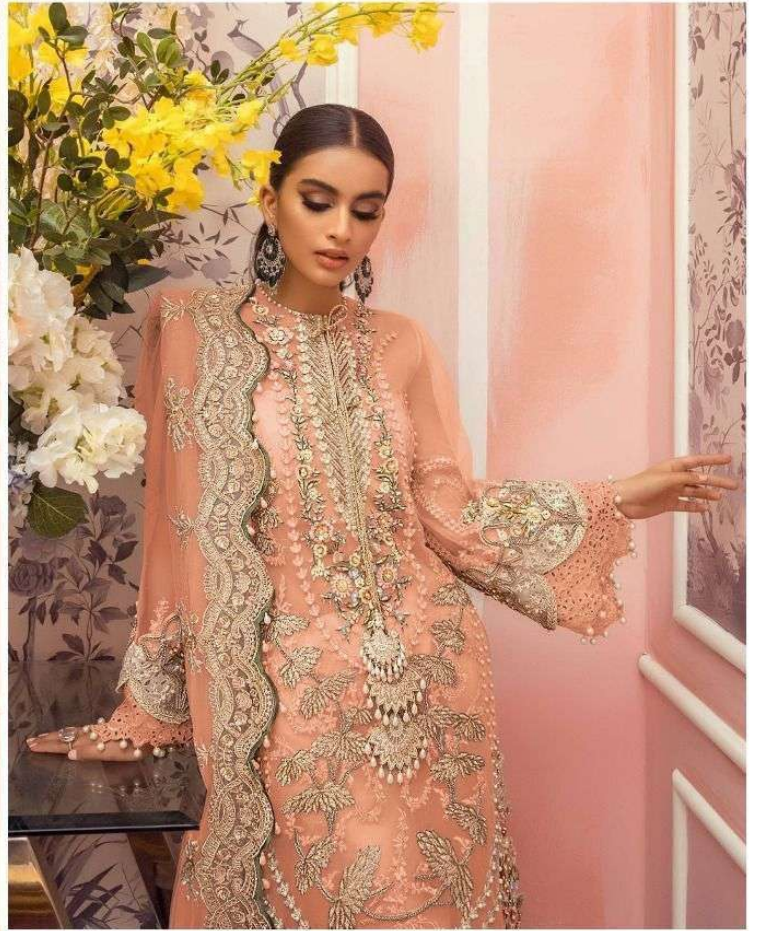
**WASHING INTRUCTIONS**

DO NOT USE ANY TYPE OF BLEACH OR STAIN REMOVING CHEMICALS  
BEFORE CUTTING / STITCHING, FABRIC SHOULD BE SOAKED BE SOAKED IN WATER  
( ALL COMPONENTS SEPARATELY ) FOR 15 MINUTES  
DO NOT KEEP WET FABRIC IN TWISTED FROM IN ORDER TO AVOID COPY MARKS |  
WASH COLOURED AND WHITE FABRICS SEPARATELY  
IRON CLOTHES AT MODERATE TEMPERATURE | DO NOT DRY FABRIC IN DIRECT SUNLIGHT  
( EXTRA LACES, HANGINGS AND ACCESSORIES ARE NOT INLUDED )

**C-1215 C**



**Fepic®**



**WASHING INTRUCTIONS**

DO NOT USE ANY TYPE OF BLEACH OR STAIN REMOVING CHEMICALS  
BEFORE CUTTING / STITCHING, FABRIC SHOULD BE SOAKED BE SOAKED IN WATER  
( ALL COMPONENTS SEPARATELY ) FOR 15 MINUTES

DO NOT KEEP WET FABRIC IN TWISTED FROM IN ORDER TO AVOID COPY MARKS |  
WASH COLOURED AND WHITE FABRICS SEPARATELY

IRON CLOTHES AT MODERATE TEMPERATURE | DO NOT DRY FABRIC IN DIRECT SUNLIGHT  
( EXTRA LACES, HANGINGS AND ACCESSORIES ARE NOT INLUDED )

**C-1215 D**



**Fepic**<sup>®</sup>



**WASHING INTRUCTIONS**

DO NOT USE ANY TYPE OF BLEACH OR STAIN REMOVING CHEMICALS  
BEFORE CUTTING / STITCHING, FABRIC SHOULD BE SOAKED BE SOAKED IN WATER  
( ALL COMPONENTS SEPARATELY ) FOR 15 MINUTES

DO NOT KEEP WET FABRIC IN TWISTED FROM IN ORDER TO AVOID COPY MARKS |  
WASH COLOURED AND WHITE FABRICS SEPARATELY

IRON CLOTHES AT MODERATE TEMPERATURE | DO NOT DRY FABRIC IN DIRECT SUNLIGHT  
( EXTRA LACES, HANGINGS AND ACCESSORIES ARE NOT INDUDED )

**C-1215 E**





C-1215 A

C-1215 B

C-1215 C

C-1215 D

C-1215 E

**Fepic**®  :\_Fepic  :Fb.com/Fepic11