

NEUTRAL TERRITORY #3093

nakkashi
DESIGN. PRODUCTION. ARTISTRY.



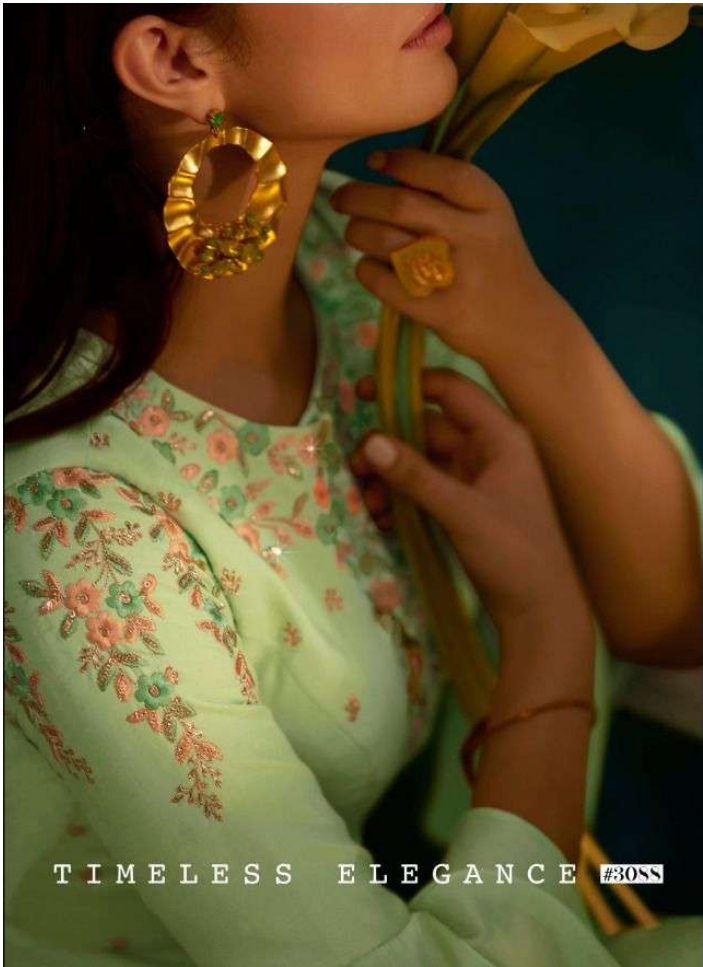
Startling Panache

A burst of fresh air comes alive in the form of this amber ensemble, which gives perfectly playful vibe with the new season.

#3087



YELLOW MOOAL
SATIN GOWN
WITH MIRROR
WORK EMBROIDERY
ON IT. PAIRED WITH
YELLOW CHIFFON DUPATTA.



TIMELESS ELEGANCE #30SS



nakkashi

*Embellished with floral embroidery,
the exquisite mint green gets a makeover for the new vision of party wear.*

And like you're stepping straight out a royal empire with your dream of looking like a princess is just accomplished!

nakkashi

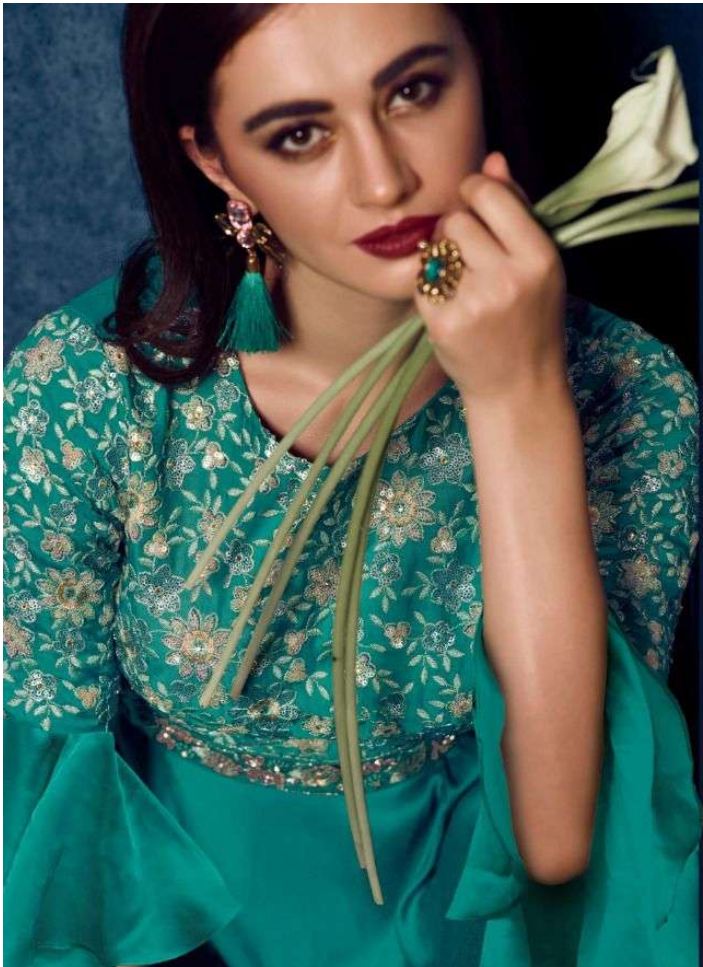
REFLECTING YOU



CHAMPAGNE COLOUR
MODAL SATIN
BLOUSE WITH
ZARI EMBROIDERY
ON IT PAIRED WITH
CHAMPAGNE COLOUR
GHEFFON DUPATTA

#3089





SIGNATURE EPISODE

Flawless fabric, jaw-dropping styling, and timeless elegance are our signature style and present in every garment handcrafted under Nakkaashi.

nakkashi
FINDING PERFECTION IN EVERY THREAD



#3090

STRONG ARCTIC
BLUE COLOUR
MODAL SATIN
GOWN WITH
SEQUIN WORK
ON IT PAIRED
WITH MATCHING
CHIFFON DUPATTA

With beauty in a wonderful garment, wedding, count on us to bring the drama to dream.

nakkashi
ETHEREAL PRODUCTIONS OF PUNJAB

CRIMSON TIDE



#3091

nakkashi
L'UNIQUE PAKISTANI FASHION

All those glittering gold on silver palette to add a touch and with your attire
be a charmer with confident smile!



GLITTERING FLAIR #3092

nakkashi
LIVING PERFECTION M. EL. HAKKI



NEUTRAL TERRITORY

NEUTRAL TERRITORY



YBROWNISH GREY COLOUR
MODAL SATIN GOWN
WITH ZARI WORK ON IT
PAIRED WITH CHIFFON DUPATTA



#3087



#3088



#3091



#3092



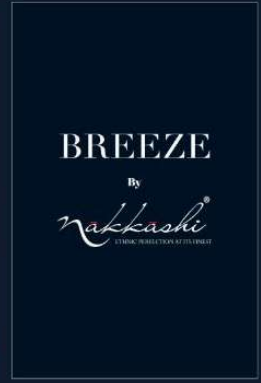
#3089



#3090



#3093



BREEZE

GOWN (FULL STICH)

SR.NO.	D.NO	Gown	STICH	Dupatta	RATE
1	3087	Yellow Colour Modal Satin Fabrics With Mirror Work Embroidery	BUCRAM	Yellow Colour Chiffon fabrics	2445
2	3088	Pastel Green Colour Modal Satin Fabrics With Delicate Resham work	BUCRAM	Pastel Green Colour Chiffon Fabrics	2025
3	3089	Champagne Colour Modal Satin Fabrics,Blouse with Zari Embroidery	BUCRAM	Champagne Colour Chiffon Fabrics	2205
4	3090	Strong Arctic Blue Colour Modal Satin Fabrics With Sequin Work	BUCRAM	Strong Arctic Blue Colour Chiffon Fabrics	2625
5	3091	Festive Red Colour Modal Satin Fabric With Leather Sequin Work	BUCRAM	Festive Red Colour Chiffon Fabrics	2385
6	3092	Bottle Green Colour Modal Satin Fabrics With Sequin Texured Yoke & Resham Work Kalis	BUCRAM	Bottle Green Colour Chiffon Fabrics	2135
7	3093	Ybrownish Grey Colour Modal Satin Fabrics With Zari Work	BUCRAM	Ybrownish Grey Colour Chiffon Fabrics	2355
			TOTAL	16175/-	
			AVERAGE	2310/-	
NOTE :-	Gown Are Ready To wear For Size 40" But Can Be Altered Uptill 36" To 44" Length-56"				